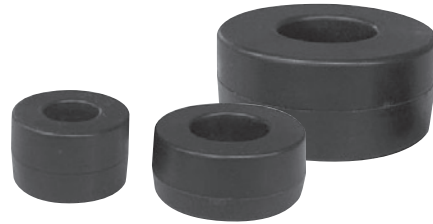


**Not Recommended Series**

The FM series coils are made of nano-crystal.

### ◆ MAJOR USES

- Signal power line noise control
- DC power line noise control
- AC power line noise control
- Filter line



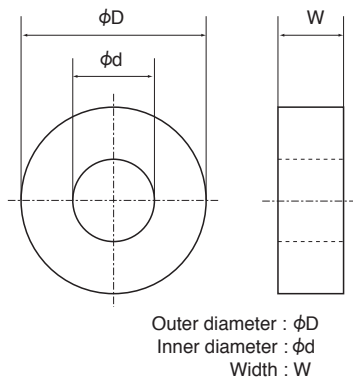
### ◆ FEATURES

- The high permeability core is made of nano-crystal
- High impedance in spite of a small number of turns
- Excellent temperature characteristics
- Conforming to insulating type B and incombustibility UL94V-0

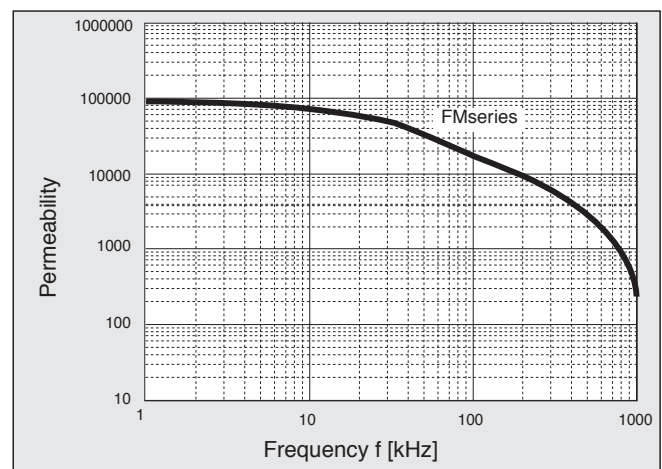
### ◆ CORE STANDARD SPECIFICATIONS

Core Part No. (Old Core Part No.)	Abbreviation	Cross Sectional Area cm <sup>2</sup>	Magnetic Path Length cm	Outside Dimensions			Inductance Coefficient AL Value  I <sub>dc</sub> =0[A] μH (100kHz)
				φD mm	φd mm	W mm	
LRF251515MK (F251515MK)	M8K	0.63	6.40	28.3	12.7	17.5	18.3
LRF322015MK (F322015MK)	MRK	0.73	8.17	35.2	17.5	17.3	16.6
LRF372315MK (F372315MK)	MJK	0.85	9.42	40.5	19.5	18.0	17.2
LRF462715MK (F462715MK)	MQK	1.15	11.50	49.4	22.7	18.0	18.6
LRF462725MK (F462725MK)	MKK	1.92	11.50	49.4	22.7	28.0	31.0
LRF603525MK (F603525MK)	MLK	2.53	14.90	66.7	29.3	29.2	31.6
LRF624520MK (F624520MK)	MLCH	1.36	16.80	66.0	41.0	24.0	15.2

### ◆ DIMENSIONS OF CORE

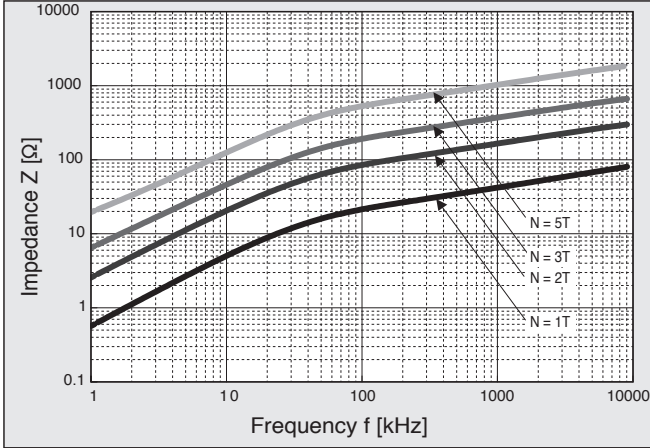


### ◆ FREQUENCY - PERMEABILITY CHARACTERISTICS



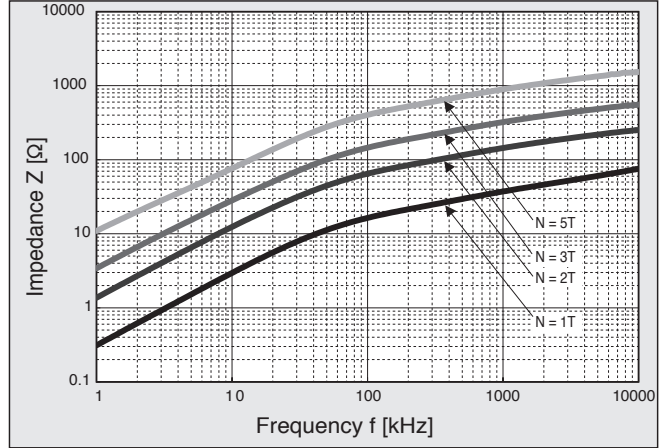
◆FREQUENCY - IMPEDANCE CHARACTERISTICS (1)

●LRF251515MK



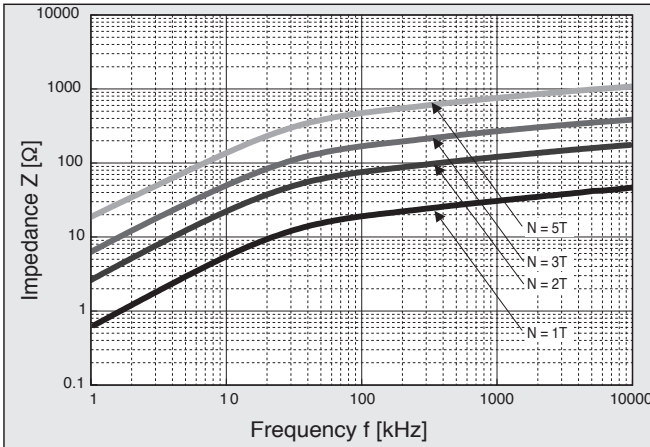
◆FREQUENCY - IMPEDANCE CHARACTERISTICS (2)

●LRF322015MK



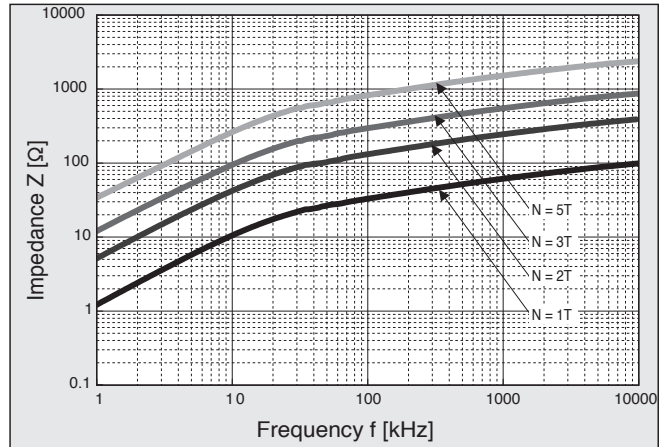
◆FREQUENCY - IMPEDANCE CHARACTERISTICS (3)

●LRF372315MK



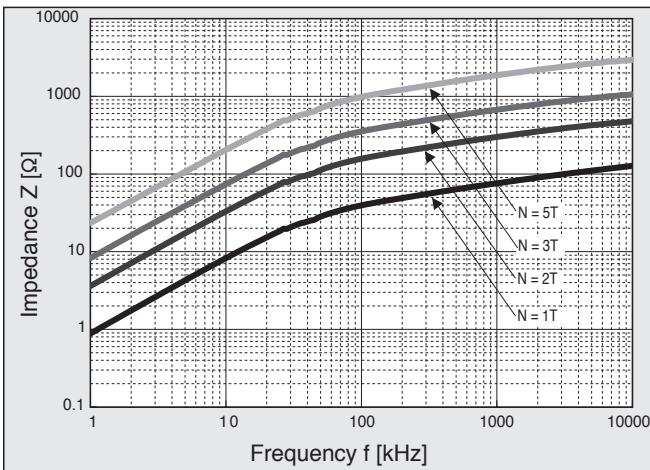
◆FREQUENCY - IMPEDANCE CHARACTERISTICS (4)

●LRF462725MK



◆FREQUENCY - IMPEDANCE CHARACTERISTICS (5)

●LRF603525MK



◆FREQUENCY - IMPEDANCE CHARACTERISTICS (6)

●LRF624520MK

