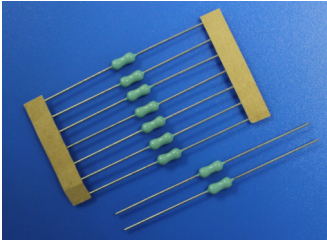


211 Micro Cartridge Fuse



Main Characteristics
 Micro Cartridge fuse; Fast-Acting(F)
Standard
 UL248-14

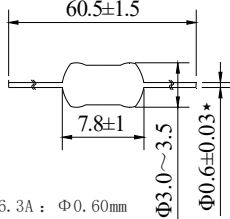
Materials
 Tube: Ceramic Tube
 End Caps: Nickel plated brass
 Axial Leads: Nickel plated caps
 Tin plated copper wires

Operating Temperature
 -55°C to +125°C
Storage Conditions
 +10°C to +60°C
 Relative humidity: ≤75% yearly average
 Without dew, maximum 30 days at 95%

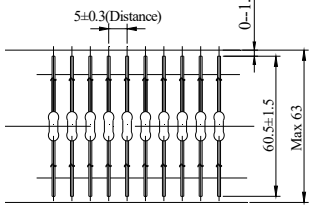
Vibration Resistance
 24 cycles at 15 min. each (60068-6)
 10-60Hz at 0.75mm amplitude
 60-2000Hz at 10g acceleration

Soldering Parameters
 260°C. ≤5 sec (Wave Soldering)
 350°C. ≤3 sec (Hand Soldering)
Soldering Peak:
 260°C. 10 sec. (IEC 60068-20)

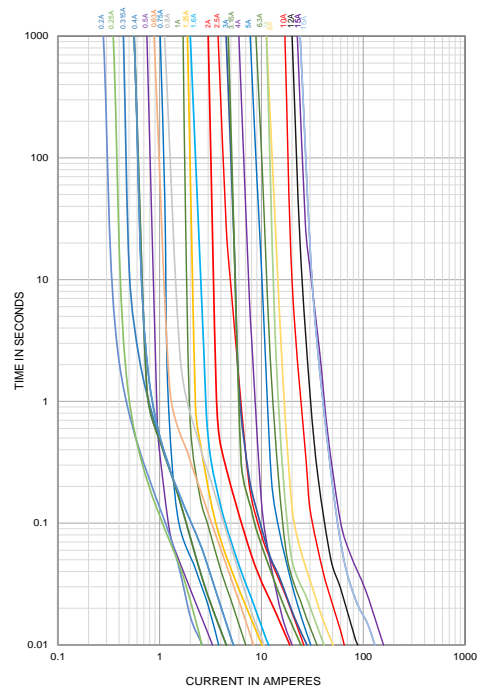
Dimensions (unit: mm)



★:
 100mA~6.3A : Φ0.60mm
 8.0A~20.0A : Φ0.80mm



Average Current Curve(I-T Curve)



Time vs Current Characteristics: UL248-14

Rated Current	100%	200%
200mA~16A	>4h	<60s



Electrical Characteristics at 25°C

Amp code	Rated Current	Rated Voltage	Typical Cold Resistance (mΩ)	Nominal Melting I ² t (A ² sec)	Breaking Capacity	Approvals			
						cULus	cURus	TUV	PSE
0200	200mA	125V AC 250V AC	990	0.077	50A@250V AC 50A@125V AC	•	○	○	○
0250	250mA		680	0.082		•	○	•	○
0315	315mA		369	0.190		•	○	•	○
0375	375mA		340	0.200		•	○	○	○
0400	400mA		270	0.210		•	○	•	○
0500	500mA		201	0.480		•	○	•	○
0630	630mA		160	0.930		•	○	•	○
0750	750mA		87.0	0.093		•	○	○	○
0800	800mA		62.0	0.564		•	○	•	○
1100	1.00A		60.0	0.531		•	○	•	○
1125	1.25A		44.3	1.03		•	○	•	○
1150	1.50A		33.1	1.60		•	○	○	○
1160	1.60A		37.84	0.85		•	○	•	○
1200	2.00A		30.3	2.40		•	○	•	○
1250	2.50A		20.5	5.83		•	○	•	○
1300	3.00A		19.0	5.90		○	○	○	•
1315	3.15A		17.0	5.90		○	•	•	○
1400	4.00A		13.5	4.70		○	•	•	○
1500	5.00A	10.0	8.30	○	•	○	•		
1630	6.30A	9.00	12.3	○	•	○	○		
1700	7.00A	5.88	16.6	○	•	○	○		
1800	8.00A	5.88	21.0	○	•	○	○		
2100	10.00A	5.05	41.0	○	○	•	○		
2120	12.00A	32V AC 16V AC	3.50	78.32	50A@32V AC 100A@16V AC	○	•	○	○
2150	15.00A		3.01	249.6		○	•	○	○
2160	16.00A		2.85	169.49		○	•	○	○

- Note:** (1) Permissible continuous operating current is 100% at ambient temperature of 23°C (73.4°F)
 (2) The cURus and cULus certification for 100mA~10A only by 125V and 250V AC, for 12A~16A only by 16V and 32V AC; the TUV certification only by 250V AC.
 (3) The current values used for calculating I²T should be within the standard range of 8ms ~ 10ms.

Ordering Information

Series	Amp Code	Supplementary Code	Qty
211			



Sales Contact
 sls01@beterfuse.com

Technical Support
 Kenny@betterfuse.com

National High-tech Enterprise
 SC 32C National Technical
 Committee Member of China
 Intertek ISO 9001 Certified Company
 Intertek ISO 14001 Certified Company
 Intertek QC 080000 Certified Company
 NQA IATF 16949 Certified Company

国家高新技术企业
 SC 32C 省内专家组成员单位
 ISO 9001 认证企业
 ISO 14001 认证企业
 QC 080000 认证企业
 IATF 16949 认证体系